

## Application

- Diagnose the pregnancy of Equine, Swine, Bovine, Ovine, Canine, Feline and other animals
- Diagnose animals' uteri and fetus condition
- Backfat and lean percentage calculated automatically

## Functions & features

- Display mode: B, 2B, B, B/M, M
- 100-image permanent storage & 256-frame cineloop
- Pseudo color system: 8 colors (incl. B/W)
- Measurements
  - Normal measurement: Distance, circumference, area (trochoid or ellipse), volume, etc.
  - Cardio measurement: Depth, slope, heart rate, cycle
  - OB measurement: EDD and GA for equine, bovine, ovine, swine, canine, feline and Llama
- OB report created automatically
- Grid measurement: 6 kinds(none-grid, point grid, line grid, 10mm-space point ruler, 2mm-space point ruler, 10mm & 2mm-space point ruler)
- USB port for large capacity storage ( file management, software upgrade, one-key storage), and laser color printer to print image & report
- Max scanning depth: 240mm
- Character brightness: selectable between 160,192,224,255
- Body mark: 1.General 2. Bovine 3. Canine 4. Equine 5. Feline 6. Cardio 7. Swine, total 27
- Battery: large capacity (5200MAh) battery 1PC, more than 6 hours work
- Dimension: 212x154x58mm(LxWxH)

## Standard configuration

- Main unit with 5.7-inch LED display: 1 pc
- 4.0/5.0/6.5/7.5Mhz transrectal linear probe : 1 pc
- Power adapter: 1 pc
- lithium battery : 1 pc (for 6-hour operation)
- Protective silicon coat: 1 pc
- Sunshine cover: 1 set (3-level adjustable)
- Black plastic suitcase: 1 pc
- Charger 1pc

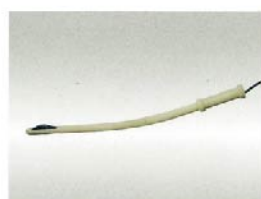
## Other Optional parts



Leather Saddlebag



Goggles (Video Glass)



Extension handle of rectal probe



Large capacity lithium battery



Version No. CNBW-2016-07



# BW570V

**BONDWAY**  
since 2006

**SHENZHEN BONDWAY ELECTRONICS CO., LTD**  
Add: A1205 Lianheng Biz Bldg, No.391 Ainan Road, Longgang  
Dist. Shenzhen 518116, China  
Tel : 0086-755-86224650 26400367 Fax: 0086-755-26522952  
Email: info@szbondway.com info@bondwaymedical.com  
www.szbondway.com www.bondwaymedical.com  
We serve the right to make modification without prior written notice



Over 10 years' experience in the development and manufacture of veterinary ultrasound, veterinary pulse oximeter and monitors. Over 100 countries and regions Bondway vet medical products have been exported to

**BONDWAY**  
since 2006



# BW570V

DIGITAL veterinary ultrasound scanner

## Animals applicable



Bovine



Equine



Llama



Swine



Feline



Canine



Sheep

## Brief Introduction

BW570V is designed for pregnancy imaging and follicular aspiration like bovine, equine, ovine, canine, feline, goat, swine and llama etc, and also good for equine tendon and ligament imaging. User-friendly design, reliable performance and professional veterinary software packages, etc make it an ideal choice for veterinary clinics or hospitals, swine-breeding farmers, stud farms, horse breeders, cattle or cow farmers, aquatic museums, zoos, and research institutions, etc.



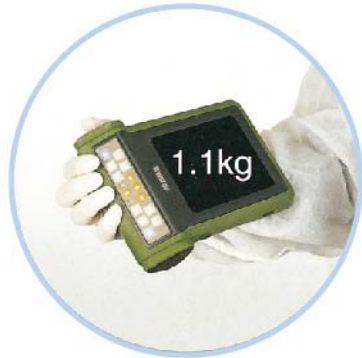
- Protective silicon coat water-proof, splash-proof, dust-proof and easy to clean



- Different holding method: handheld, chest hanging
- Sunshine cover, 3-level adjustable



- Unique alternating left/right handheld design, good for different users & Fatigue reduced



- Compact & Lightweight
- 1.1KG only



- 5.7-inch LED display, high-brightness, high contrast, wide visual angle



- Large capacity lithium battery, 6-hour operation



## Optional Probes



4.0/5.0/6.5/7.5MHz  
transrectal linear probe



2.0/2.5/3.5/5.0MHz  
transrectal convex probe



2.0/2.5/3.5/5.0MHz  
linear loin probe



2.0/2.5/3.5/5.0MHz  
convex array probe



5.0/6.5/7.5/9.0MHz  
micro-convex probe



5.0/6.5/7.5/9.0MHz  
high-frequency linear array probe