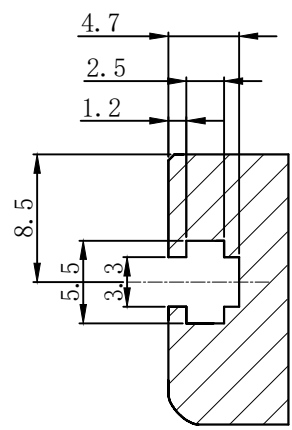
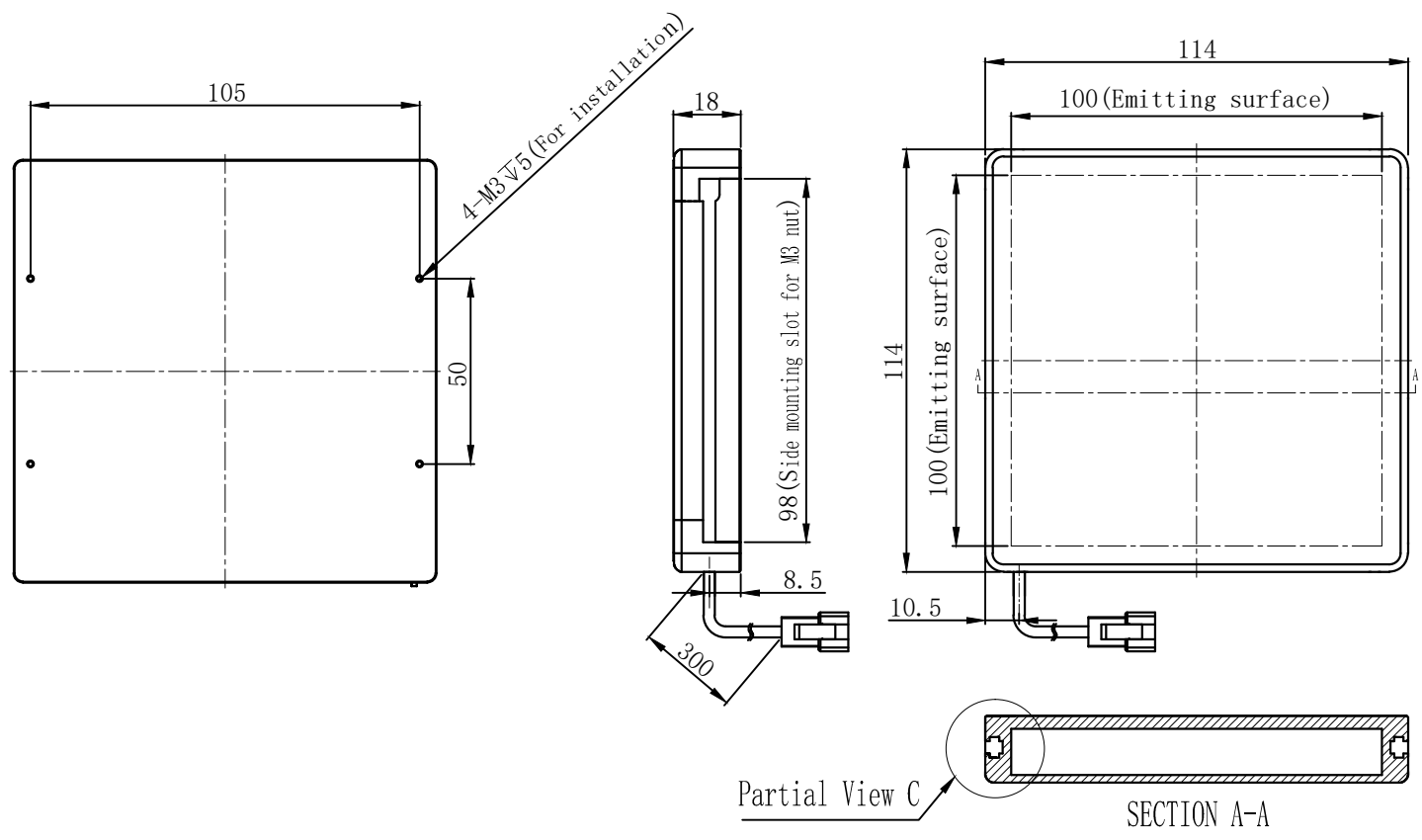


Pin1 -- 棕色/+  
Pin2 -- 空 /NC  
Pin3 -- 蓝色/-



Partial View C, Four sides, Mounting slot for M3 nut, Scale 4:1

Product Installation Dimensions					Design	成忠波		2017.07.09		wordop® 沃德普	
Input Voltage	Power				Approve					Name	Bottom-Irradiation Backlights
	R	W/G/B	IR	UV	Weight	View Direction	Ratio	Unit	Model	FQ2-100X100	
24V	9.5W	10.0W	21W		245g		1:2	mm			