

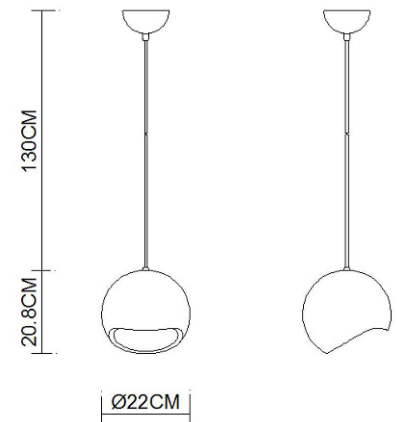
Specification Sheet

Picture:



Product size:

Name: ----- Cherry Plaster Pendant
Code: ----- 3298
Finish: ----- White
Main Material: --- Steel+Plaster
Shade Material: -- Plaster



Lamp Source: E14

Wattage: 1x40W / 1x9W

Input Voltage: 220~240 V

Lumen: 340 lm

Switch: Na

Energy Efficiency Class:

Plug: Na

Specification:



Inner Box:

Gross Weight: 11.2KGS

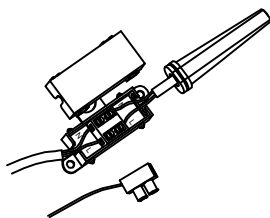
275*275*315(mm) 1pc

Net Weight: 8KGS

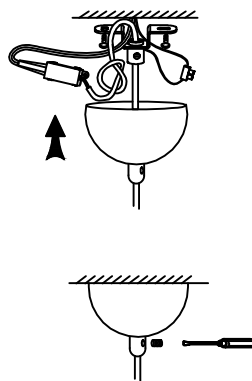
Outer Carton:

570*570*340(mm) 4pcs

Cable Length / Terminal Block:



Installation Instruction:



size:Ø115xH:57.3

