

# Online Dual Sided AOI AIS50X Series

**Application** behind Wave Soldering/behind reflow/before packaging

- ✓ More accurate inspection by AI intelligent algorithm
- ✓ Faster inspection with Dual Side
- ✓ Simple operation by smart minimalist programming
- ✓ Multi-apply to benefit different assessment



## Core Functions

### Support Mixed PCB inspection

Support mixed PCB and multi-in-1 board inspection by AI positioning algorithm

### Online/offline programming

Online programming to save linedown time

### Fuzzy feature inspection

Intelligently inspect fuzzy features such as color ring resistor, same-color feature materials, silk screen interference on surface

### AI training tool

Model self-training for special components, reduce false positive rate by continuous learning to improve inspection accuracy.

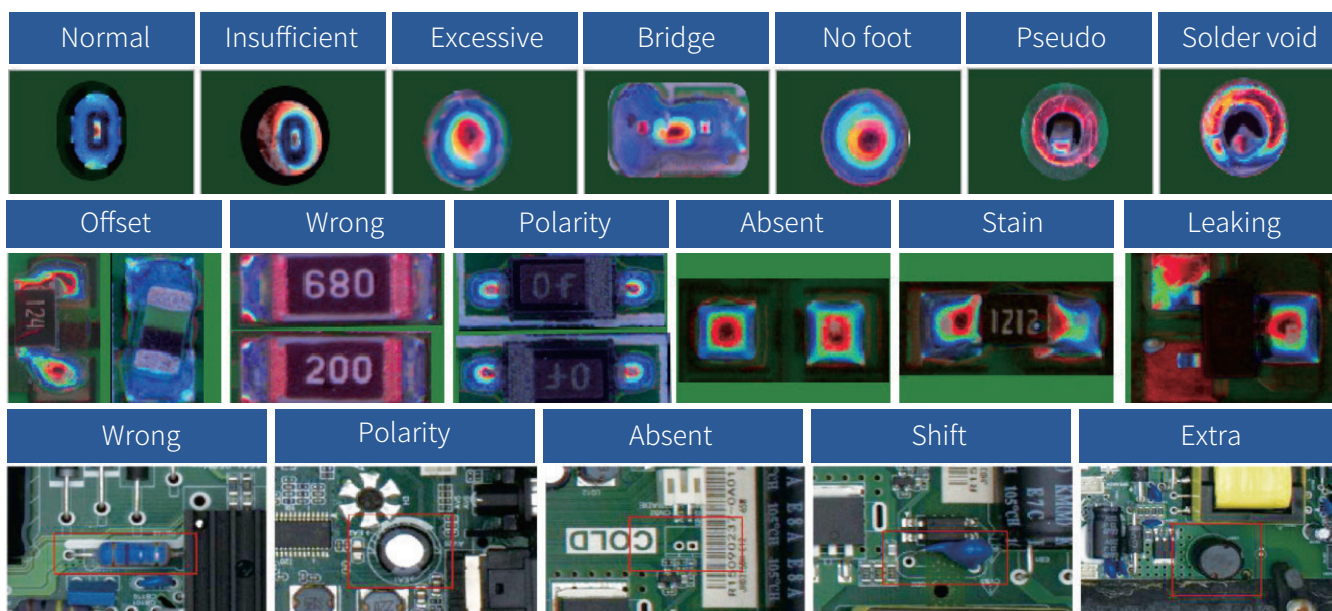
### Multi-function

Multi-purpose, inspect component defects of SMD, THT, solder joint, etc

### SPC data analysis

Real-time data recording and analysis, providing evidence for process improvement, and real-time trace data

## Detectable defects



## Specifications

Category	Item	AIS501	AIS501-L
PCBA	Size	3 section track: 50*50mm~350*460mm Single section track: 430*460mm	3 section track: 50*50mm~350*650mm Single section track: 50*50mm~430*650mm
	Thickness	0.5mm-6mm	
	Height of elements	Top:75mm, Bottom: 75mm	
	Processing edge	3mm	
Optical specification	Camera	5MP color	
	Lightsource	RGB+W	
	Resolution & FOV	21.5um@52.6*44mm	
Inspection-related	Components	Absent, Reversed, Mis-alignment, Broken, Extra,Foreign matter,Stained, etc.	
	Solder	Insufficient solder,excessive solder,bridging,pseudo solder etc.	
	Other function	Bar code Recognition / QR code Recognition/ OCR	
	Algorithm	CNN,Color contrast,Outline recognition,Offset inspection,Template matching,Character comparison,OCR,etc.	
	Speed	0.23sec/FOV	
Software system	Operating system	Ubuntu 18.04 LTS 64bit	
	Function	Remote control & assistance, CAD file import and user-defined model training	
	Communication method	Standard SMEMA	
	Data output	Autogenerated statistic analysis SPC	
	Special function	Automatic search of elements and quick programming	
Hardware	PC	CPU: intel i5 Display card: NVIDIA GTX1050Ti Memory: 32G DDR, 240G SSD+2T Mechanical Hard Disk Network: 1000M Wired Network Card	
	Display	23.8 inch FHD display	
	Dimension and weight	(L*H*W) 1050*1650*1335mm, net weight:860Kg	(L*H*W) 1050*1650*1535mm, net weight:1000Kg
Appearance /electric	Power and air supply and	AC 220V, rated power 500W, 0.4-0.6Mpa	
	Work environment	Temperature: 10~45°C, Humidity: 30~85%RH	

\*Specifications are subject to change without notice.