



Test Report

No.T52310250619TC

Date: MAR 02, 2023

Page 1 of 9

DONGGUAN JIAN PLASTIC & METAL PRODUCTS LTD.
NO. 6, GAOBU BLVD,GAOBU TOWN, DONGGUAN CITY, GUANGDONG PROVINCE, CHINA 523278

The following samples were submitted and identified by/on behalf of the client as:

- 1.GOLD PLATED ; 2.ANTIQUE GOLD PLATED ; 3.SILVER PLATED ; 4.ANTIQUE SILVER PLATED ;
- 5.NICKEL PLATED ;6.BLACK NICKEL PLATED;7.SATIN GOLD PLATED ;8.SATIN SILVER PLATED ;
- 9 SATIN NICKEL PLATED;10.CHROME PLATED ;11.COPPER PLATED ; 12.ANTIQUE COPPER PLATED ;
- 13.BRONZE PLATED ; 14.ANTIQUE BRONZE PLATED; 15.DYEING BLACK FINISH

Buyer : WORLD WIDE
 Manufacturer : CHINA
 Country of Origin : CHINA
 Country of Destination : WORLD WIDE
 Requested Age Grading : 3+

Sample Receiving Date : FEB 15, 2023
 Further Information Date : MAR 01, 2023
 Testing Period : FEB 15, 2023 TO MAR 02, 2023



Unless otherwise agreed in writing, this document is issued by the Company subject to its General Conditions of Service printed overleaf, available on request or accessible at <http://www.sgs.com/en/Terms-and-Conditions.aspx> and, for electronic format documents, subject to Terms and Conditions for Electronic Documents at <http://www.sgs.com/en/Terms-and-Conditions/Terms-e-Document.aspx>. Attention is drawn to the limitation of liability, indemnification and jurisdiction issues defined therein. Any holder of this document is advised that information contained hereon reflects the Company's findings at the time of its intervention only and within the limits of Client's instructions, if any. The Company's sole responsibility is to its Client and this document does not exonerate parties to a transaction from exercising all their rights and obligations under the transaction documents. This document cannot be reproduced except in full, without prior written approval of the Company. Any unauthorized alteration, forgery or falsification of the content or appearance of this document is unlawful and offenders may be prosecuted to the fullest extent of the law. Unless otherwise stated the results shown in this test report refer only to the sample(s) tested and such sample(s) are retained for 30 days only.
 Attention: To check the authenticity of testing / inspection report & certificate, please contact us at telephone:(86-755) 8307 1443, or email: CN.Doccheck@sgs.com

SGS-CSTC Standards Technical Services Co.,Ltd.
 Shenzhen Branch Testing Center Hardlines

Room 101-501, Plant 4 & Room 101, Plant 2 & Room 101, Plant 3 & Room 301-501, Plant 3, Jianghao (Bantian) Industrial Plant Area, No.430, Jilua Road, Bantian Community, Bantian Street, Longgang District, Shenzhen, Guangdong, China 518129 www.sgs.com.cn
 中国·广东·深圳市龙岗区坂田街道坂田社区吉华路430号江灏(坂田)工业厂区厂房4号 101-901、2号101、3号101、3号301-501 邮编: 518129 t:(86-755) 25328888 sgs.china@sgs.com

Member of the SGS Group (SGS SA)



Test Report

No. T52310250619TC

Date: MAR 02, 2023

Page 2 of 9

Test Requested		Conclusion
1.	CPSIA section 101 - Total Lead content	--
	CPSIA section 101(f) (1) – Lead in paint/similar surface coating material	NOT APPLICABLE (SEE REMARK)
	CPSIA section 101(a) (2) – Lead in accessible substrate materials (Including Children’s Metal Jewelry)	PASS
2.	US California Proposition 65 – Cadmium Content	PASS
3.	Client’s Requirement – Cadmium Content	PASS

Remark: There were no surface coating found in the said submitted sample.

***** FOR FURTHER DETAILS, PLEASE REFER TO THE FOLLOWING PAGE(S) *****

Signed for and on behalf of
SGS-CSTC Standards Technical
Services Co., Ltd. Shenzhen Branch Testing Center



Qu Ping, Kiky
Dept. Manager



Unless otherwise agreed in writing, this document is issued by the Company subject to its General Conditions of Service printed overleaf, available on request or accessible at <http://www.sgs.com/en/Terms-and-Conditions.aspx> and, for electronic format documents, subject to Terms and Conditions for Electronic Documents at <http://www.sgs.com/en/Terms-and-Conditions/Terms-e-Document.aspx>. Attention is drawn to the limitation of liability, indemnification and jurisdiction issues defined therein. Any holder of this document is advised that information contained hereon reflects the Company's findings at the time of its intervention only and within the limits of Client's instructions, if any. The Company's sole responsibility is to its Client and this document does not exonerate parties to a transaction from exercising all their rights and obligations under the transaction documents. This document cannot be reproduced except in full, without prior written approval of the Company. Any unauthorized alteration, forgery or falsification of the content or appearance of this document is unlawful and offenders may be prosecuted to the fullest extent of the law. Unless otherwise stated the results shown in this test report refer only to the sample(s) tested and such sample(s) are retained for 30 days only.
Attention: To check the authenticity of testing / inspection report & certificate, please contact us at telephone:(86-755) 8307 1443, or email: CN.Doccheck@sgs.com

SGS-CSTC Standards Technical Services Co., Ltd.
Shenzhen Branch Testing Center Hardlines

Room 101-901, Plant 4 & Room 101, Plant 2 & Room 101, Plant 3 & Room 301-501, Plant 3, Jianghao (Bantian) Industrial Plant Area, No.430, Jilua Road, Bantian Community, Bantian Street, Longgang District, Shenzhen, Guangdong, China 518129 www.sgs.com.cn
中国·广东·深圳市龙岗区坂田街道坂田社区吉华路 430 号江豪 (坂田) 工业区厂房 4 号 101-901、2 号 101、3 号 101、3 号 301-501 邮编: 518129 t:(86-755) 25328888 sgs.china@sgs.com

Member of the SGS Group (SGS SA)

Results:

CPSIA - Lead in Accessible Substrate Materials

Method (non-metallic materials): With reference to CPSC-CH-E1002-08.3 - Standard Operation Procedure for Determining Total Lead (Pb) in Non-Metal Children Product

Method (metal materials): With reference to CPSC-CH-E1001-08.3 - Standard Operating Procedure for Determining Total Lead (Pb) in Children’s Metal Products (Including Children’s Metal Jewelry)

Test Item(s)	Lead (Pb)		
Permissible Limit (ppm)	100		
Specimen Description	Alias No.	Tracing No.	Result(s) (ppm)
1. Gold plated	1	1	ND
2. Antique gold plated	1	2	ND
3. Silver plated	1	3	ND
4. Antique silver plated	1	4	ND
5. Nickel plated	1	5	ND
6. Black nickel plated	1	6	ND
7. Satin gold plated	1	7	ND
8. Satin silver plated	1	8	ND
9. Satin nickel plated	1	9	ND
10. Chrome plated	1	10	ND
11. Copper plated	1	11	ND
12. Antique copper plated	1	12	ND
13. Bronze plated	1	13	ND
14. Antique bronze plated	1	14	ND
15. Dyeing black finish	1	15	ND

- Note:
- ppm = parts per million
 - ND = Not Detected (lower than MDL)
 - MDL = Method Detection Limit = 10 ppm
 - 1% = 10000 mg/kg = 10000 ppm

The below note(s) is(are) applicable in case the relevant superscript(s) and symbol(s) was(were) shown in the result table:

- ^Δ Test result is over recommended action limit (80% of the regulatory limit). As the result is based on composite test and falls into an uncertain range, where “Pass” or “Fail” cannot be truly defined, “Interim-Fail” is given since the specimen may possibility fail according to the regulatory limit. Individual test is highly recommended to determine the exact Lead content in each component The decision rule has prescribed in the regulation or standard, conformity reporting will base on the standard.
- + Composite test has been performed as per client’s request and the results are calculated using the minimum specimen weight
- * Exceeds Permissible Limit



Unless otherwise agreed in writing, this document is issued by the Company subject to its General Conditions of Service printed overleaf, available on request or accessible at <http://www.sgs.com/en/Terms-and-Conditions.aspx> and, for electronic format documents, subject to Terms and Conditions for Electronic Documents at <http://www.sgs.com/en/Terms-and-Conditions/Terms-e-Documents.aspx>. Attention is drawn to the limitation of liability, indemnification and jurisdiction issues defined therein. Any holder of this document is advised that information contained hereon reflects the Company’s findings at the time of its intervention only and within the limits of Client’s instructions, if any. The Company’s sole responsibility is to its Client and this document does not exonerate parties to a transaction from exercising all their rights and obligations under the transaction documents. This document cannot be reproduced except in full, without prior written approval of the Company. Any unauthorized alteration, forgery or falsification of the content or appearance of this document is unlawful and offenders may be prosecuted to the fullest extent of the law. Unless otherwise stated the results shown in this test report refer only to the sample(s) tested and such sample(s) are retained for 30 days only.

Attention: To check the authenticity of testing / inspection report & certificate, please contact us at telephone:(86-755) 8307 1443, or email: CN.Doccheck@sgs.com

US California Proposition 65 – Cadmium Content

Method: With reference to CPSC-CH-E1003-09.1 / CPSC-CH-E1002-08.3 / CPSC-CH-E1001-08.3

Analysis was performed by Inductively Coupled Plasma Optical Emission Spectrometer (ICP-OES) / Inductively Coupled Plasma – Mass Spectrometry (ICP-MS)

Test Item(s)	Cadmium (Cd)		
Specimen Description	Alias No.	Tracing No.	Result(s) (ppm)
1. Gold plated	2	1	ND
2. Antique gold plated	2	2	ND
3. Silver plated	2	3	ND
4. Antique silver plated	2	4	ND
5. Nickel plated	2	5	ND
6. Black nickel plated	2	6	ND
7. Satin gold plated	2	7	ND
8. Satin silver plated	2	8	ND
9. Satin nickel plated	2	9	ND
10. Chrome plated	2	10	ND
11. Copper plated	2	11	ND
12. Antique copper plated	2	12	ND
13. Bronze plated	2	13	ND
14. Antique bronze plated	2	14	ND
15. Dyeing black finish	2	15	ND

- Note:
- ppm = parts per million
 - ND = Not Detected (lower than MDL)
 - MDL = Method Detection Limit = 5 ppm

The below note(s) is(are) applicable in case the relevant superscript(s) and symbol(s) was(were) shown in the result table:

- + Composite test has been performed as per client’s request and the results are calculated using the minimum specimen weight
- * Exceed Permissible Limit, Product improvement or Warning statement required

Proposition 65 requires businesses to provide warnings to Californians about significant exposures to chemicals that cause cancer, birth defects or other reproductive harm. These chemicals can be in the products that Californians purchase, in their homes or workplaces, or that are released into the environment. By requiring that this information be provided, Proposition 65 enables Californians to make informed decisions about their exposures to these chemicals.

⚠️WARNING: This product can expose you to chemicals including Cadmium, which is known to the State of California to cause cancer and birth defects or other reproductive harm. For more information, go to <https://www.p65warnings.ca.gov/>



Unless otherwise agreed in writing, this document is issued by the Company subject to its General Conditions of Service printed overleaf, available on request or accessible at <http://www.sgs.com/en/Terms-and-Conditions.aspx> and, for electronic format documents, subject to Terms and Conditions for Electronic Documents at <http://www.sgs.com/en/Terms-and-Conditions/Terms-e-Documents.aspx>. Attention is drawn to the limitation of liability, indemnification and jurisdiction issues defined therein. Any holder of this document is advised that information contained hereon reflects the Company’s findings at the time of its intervention only and within the limits of Client’s instructions, if any. The Company’s sole responsibility is to its Client and this document does not exonerate parties to a transaction from exercising all their rights and obligations under the transaction documents. This document cannot be reproduced except in full, without prior written approval of the Company. Any unauthorized alteration, forgery or falsification of the content or appearance of this document is unlawful and offenders may be prosecuted to the fullest extent of the law. Unless otherwise stated the results shown in this test report refer only to the sample(s) tested and such sample(s) are retained for 30 days only.
 Attention: To check the authenticity of testing / inspection report & certificate, please contact us at telephone:(86-755) 8307 1443, or email: CN.Doccheck@sgs.com

Summary of permissible limits of Cadmium requirement(s) otherwise warning label required.

Requirement(s)	Permissible Limit of Cadmium (ppm)	Effective Date
California Proposition 65 (County of Alameda Court Case No. RG-10-514803 [Consolidated with Case No. RG 10-545680 and RG 10-545687])	300	Current

Cadmium Content

Method: With reference to CPSC-CH-E1003-09.1 / CPSC-CH-E1002-08.3 / CPSC-CH-E1001-08.3

Test Item(s)	Unit	1	2	3	4	5	MDL	Client's Limit
Alias No.	--	3	3	3	3	3	--	--
Tracing No.	--	1	2	3	4	5	--	--
Cadmium (Cd)	mg/kg	ND	ND	ND	ND	ND	5	75

Test Item(s)	Unit	6	7	8	9	10	MDL	Client's Limit
Alias No.	--	3	3	3	3	3	--	--
Tracing No.	--	6	7	8	9	10	--	--
Cadmium (Cd)	mg/kg	ND	ND	ND	ND	ND	5	75

Test Item(s)	Unit	11	12	13	14	15	MDL	Client's Limit
Alias No.	--	3	3	3	3	3	--	--
Tracing No.	--	11	12	13	14	15	--	--
Cadmium (Cd)	mg/kg	ND	ND	ND	ND	ND	5	75



Unless otherwise agreed in writing, this document is issued by the Company subject to its General Conditions of Service printed overleaf, available on request or accessible at <http://www.sgs.com/en/Terms-and-Conditions.aspx> and, for electronic format documents, subject to Terms and Conditions for Electronic Documents at <http://www.sgs.com/en/Terms-and-Conditions/Terms-e-Document.aspx>. Attention is drawn to the limitation of liability, indemnification and jurisdiction issues defined therein. Any holder of this document is advised that information contained hereon reflects the Company's findings at the time of its intervention only and within the limits of Client's instructions, if any. The Company's sole responsibility is to its Client and this document does not exonerate parties to a transaction from exercising all their rights and obligations under the transaction documents. This document cannot be reproduced except in full, without prior written approval of the Company. Any unauthorized alteration, forgery or falsification of the content or appearance of this document is unlawful and offenders may be prosecuted to the fullest extent of the law. Unless otherwise stated the results shown in this test report refer only to the sample(s) tested and such sample(s) are retained for 30 days only.
Attention: To check the authenticity of testing / inspection report & certificate, please contact us at telephone:(86-755) 8307 1443, or email: CN.Doccheck@sgs.com

Specimen Description:

1. Gold plated
2. Antique gold plated
3. Silver plated
4. Antique silver plated
5. Nickel plated
6. Black nickel plated
7. Satin gold plated
8. Satin silver plated
9. Satin nickel plated
10. Chrome plated
11. Copper plated
12. Antique copper plated
13. Bronze plated
14. Antique bronze plated
15. Dyeing black finish

- Note:
- mg/kg = milligram per kilogram
 - MDL = Method Detection Limit
 - ND = Not Detected (lower than MDL)

The below note(s) is(are) applicable in case the relevant superscript(s) and symbol(s) was(were) shown in the result table:

- + Composite test has been performed as per client's request and the results are calculated using the minimum specimen weight
- * Exceeds Client's Limit



Remark 1: Since the data and / or information above division line of front page is provided by the applicant, the relevant results or conclusions of this report are only made for these data and / or information, SGS shall not be responsible for the authenticity and integrity of such data and information and the validity of the results and / or conclusions arising therefrom. Testing results only apply to the sample as received.

Remark 2: The statement of conformity has considered the decision rule based on the Guarded acceptance (8.3.2 of ISO/IEC GUIDE 98-4:2012)- When the measured value falls within the guard band, only the test data and measurement uncertainty will be reported. The guard band is equal to the expanded measurement uncertainty with a 95% coverage probability($k=2$), $w = U_{95}$. The Probability of False Accept and the Probability of False Reject of the decision rule are 2.5%.

For Upper Tolerance Limit (T_U):

Pass - when the measurement result is below $T_U - U_{95}$

Fail - when the measurement result is above $T_U + U_{95}$

Inconclusive - when the measurement result is falling in guard band $[T_U - U_{95}, T_U + U_{95}]$

For Lower Tolerance Limit (T_L):

Pass - when the measurement result is above $T_L + U_{95}$

Fail - when the measurement result is below $T_L - U_{95}$

Inconclusive - when the measurement result is falling in guard band $[T_L - U_{95}, T_L + U_{95}]$

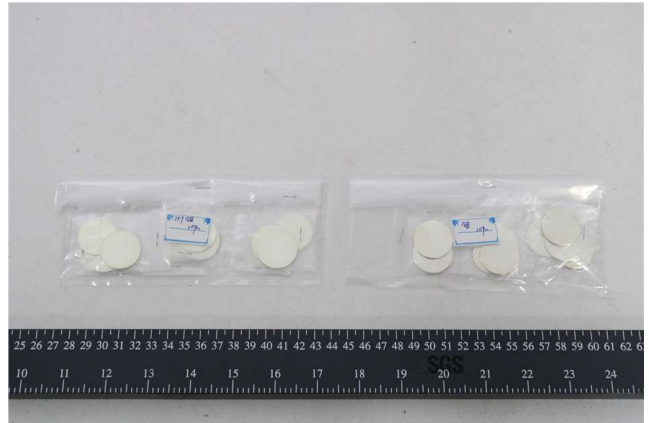


Sample Picture (As received)

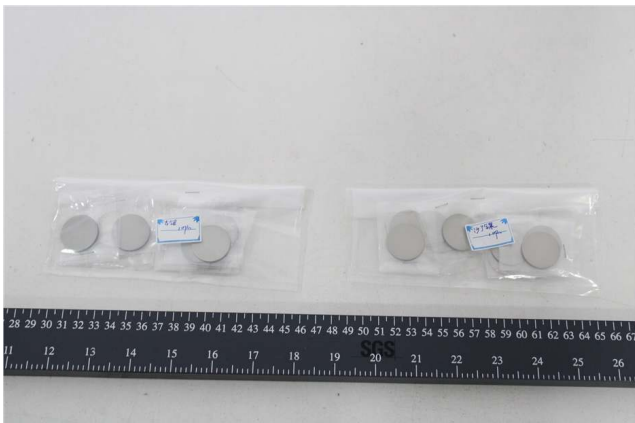
Pic.1



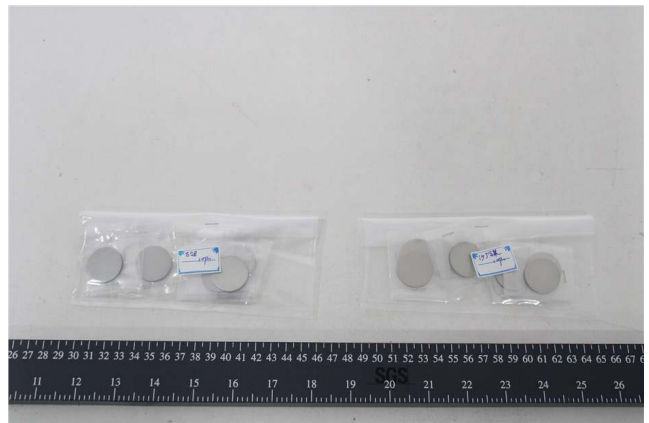
Pic.2



Pic.3



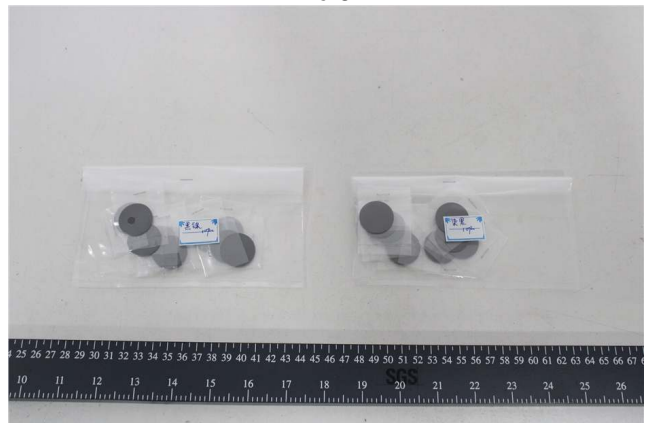
Pic.4



Pic.5



Pic.6



Pic.7



Pic.8



SGS authenticate the photo on original report only

*** End of Report ***

